



INDUSTRIAL PARK

DUC HOA III

GREEN-CLEAN-MODERN



OVERALL GROUND OF TOTAL PROJECT

Area: **1.381,08 ha**



1 SLICO INDUSTRIAL PARK

2 MINH NGAN INDUSTRIAL PARK

3 AMIC INDUSTRIAL PARK

4 LONG VIET INDUSTRIAL PARK

5 MUOI DAY INDUSTRIAL PARK

6 LIEN THANH INDUSTRIAL PARK

7 LONG DUC INDUSTRIAL PARK

8 URBAN AREA

SLICO INDUSTRIAL PAK



- Completed legal
- Area: 157.27 ha
- Time: 2054
- Status: Completed infrastructure and handing over the land





LAND MAP

SLICO INDUSTRIAL PARK



- The net construction density of the land for construction of factories and warehouses is at most 70%, the construction density of factories built over 5 floors is 60%.
- The minimum rate of green trees is 20% in each construction land lot.
- Completed infrastructure.

MINH NGAN INDUSTRIAL PARK



- ☐ Completed legal
- ☐ Area: 85.57 ha
- ☐ Time: 2058
- ☐ Status: Sold 100%





LAND MAP

MINH NGAN INDUSTRIAL PARK



- The net construction density of the land for construction of factories and warehouses is at most 70%, the construction density of factories built over 5 floors is 60%.
- The minimum rate of green trees is 20% in each construction land lot.

AMIC INDUSTRIAL PARK



- Completed legal
- Area: 244.63 ha
- Time: 2058
- Status: 100% land clearance and preparing to build infrastructure



LAND MAP

AMIC INDUSTRIAL PARK



- The net construction density of the land for construction of factories and warehouses is at most 70%, the construction density of factories built over 5 floors is 60%.
- The minimum rate of green trees is 20% in each construction land lot.

LONG VIET INDUSTRIAL PARK



- Completed legal
- Area: 86.49 ha
- Time: 2055
- Status: 100% land clearance and preparing to build infrastructure



LAND MAP

LONG VIET INDUSTRIAL PARK



- The net construction density of the land for construction of factories and warehouses is at most 70%, the construction density of factories built over 5 floors is 60%.
- The minimum rate of green trees is 20% in each construction land lot.

MUOI DAY INDUSTRIAL PARK



- Completed legal
- Area: 114.35 ha
- Time: 2060
- Status: 100% land clearance and preparing to build infrastructure





LAND MAP

MUOI DAY INDUSTRIAL PARK



- The net construction density of the land for construction of factories and warehouses is at most 70%, the construction density of factories built over 5 floors is 60%.
- The minimum rate of green trees is 20% in each construction land lot.

LIEN THANH INDUSTRIAL PARK



- Completed legal
- Area: 92.56 ha
- Time: 2058
- Status: 100% land clearance and preparing to build infrastructure





LAND MAP

LIEN THANH INDUSTRIAL PARK



- The net construction density of the land for construction of factories and warehouses is at most 70%, the construction density of factories built over 5 floors is 60%.
- The minimum rate of green trees is 20% in each construction land lot.

LONG DUC INDUSTRIAL PARK



- ☐ Completed legal
- ☐ Area: 164.74 ha
- ☐ Time: 2060
- ☐ Status: 100% land clearance and preparing to build infrastructure
- ☐ Inland Container Depot with 46 ha



LAND MAP

LONG DUC INDUSTRIAL PARK



- The net construction density of the land for construction of factories and warehouses is at most 70%, the construction density of factories built over 5 floors is 60%.
- The minimum rate of green trees is 20% in each construction land lot.

SLICO URBAN AREA



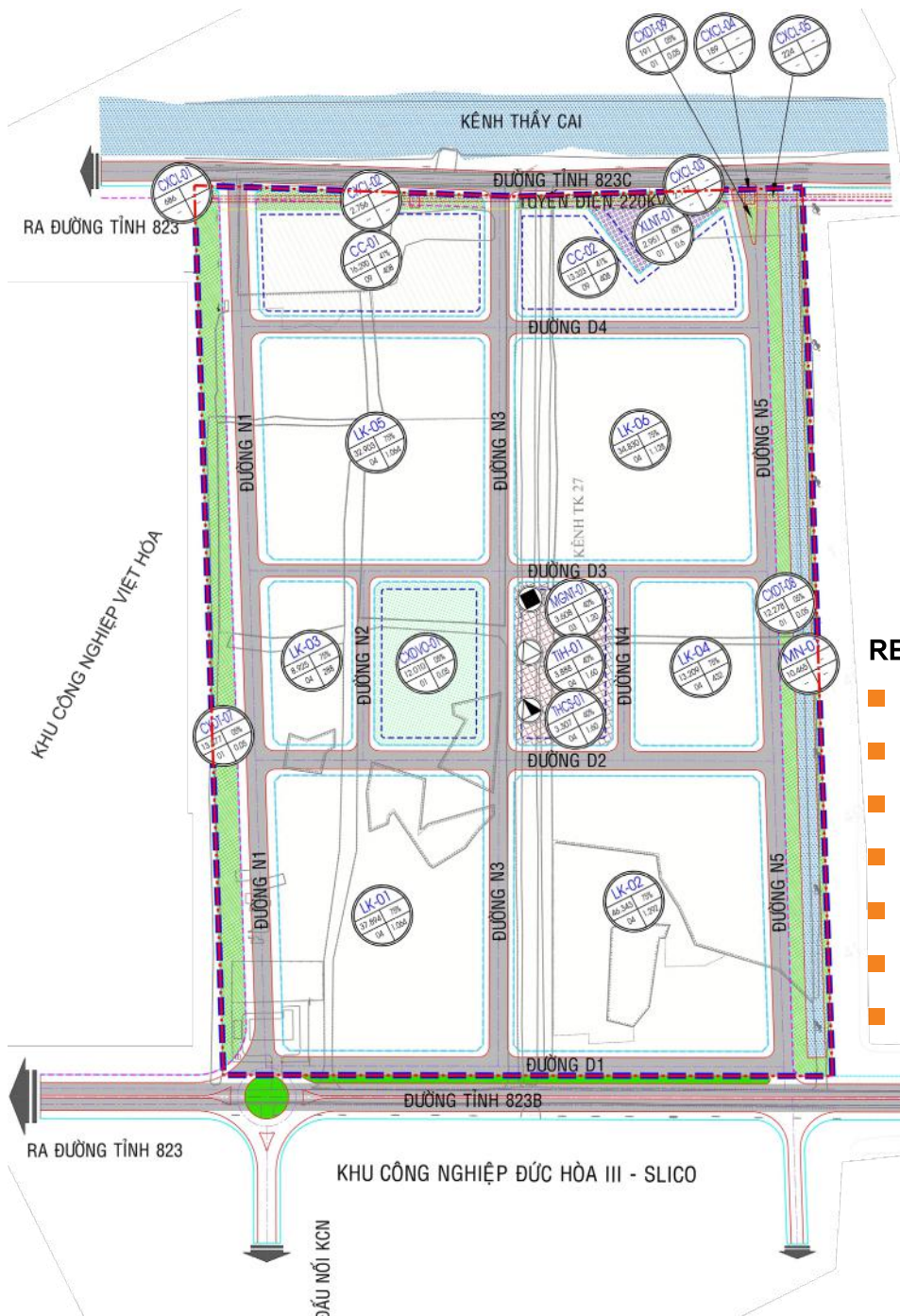
- Completed legal
- Area: 36.25 ha
- Status: 100% land clearance and preparing to build infrastructure





PLANNING MAP

SLICO URBAN AREA



URBAN LEVEL FUNCTION AREA

- Supermarket
- Cultural center - Sports center
- General hospital - Medical station
- High school
- Urban parking lot
- 110/22 KV transformer station
- Wastewater treatment area
- Urban green land

RESIDENTIAL UNIT LEVEL FUNCTION AREA

- Market
- Kindergarten
- Elementary School, Junior high school
- Training ground
- High-rise apartment (9 floors)
- Row houses (4 floors)
- Garden Villa

MINH NGAN | AMIC | RESCO URBAN AREA



- Completed legal
- Area: 399.2 ha
- Status: 100% land clearance and preparing to build infrastructure





PLANNING MAP

MINH NGAN | AMIC | RESCO URBAN AREA



URBAN LEVEL FUNCTION AREA

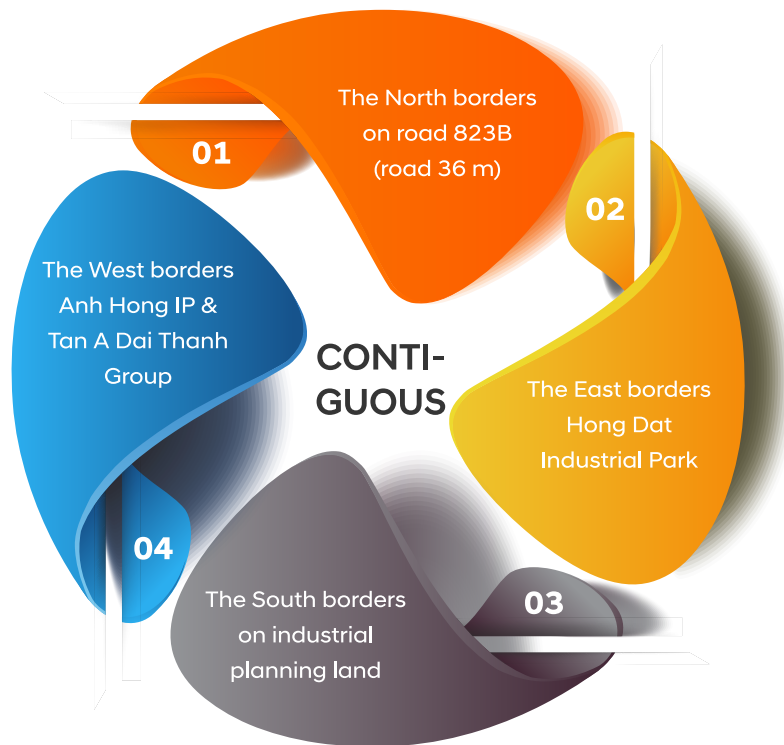
- Supermarket
- Cultural center - Sports center
- General hospital - Medical station
- High school
- Urban parking lot
- 110/22 KV transformer station
- Wastewater treatment area
- Urban green land

RESIDENTIAL UNIT LEVEL FUNCTION AREA

- Market
- Kindergarten
- Elementary School, Junior high school
- Training ground
- High-rise apartment (9 floors)
- Row houses (4 floors)
- Garden Villa

WHY INVEST AT DUC HOA III ?

- Complete legal.
- Many surrounding industrial zones and available workforce.
- The green strip of trees on both sides of the road is 8m on each side to create landscape and environment around the industrial park is always GREEN, fresh and CLEAN air.





REGIONAL LINK

Duc Hoa III Industrial Park Project is adjacent to Ho Chi Minh City such as Cu Chi, Binh Chanh and Hoc Mon districts.

Traffic connection from Beltway 3

- The whole area of provinces such as Binh Duong, Dong Nai, Tay Ninh, Ho Chi Minh City and Long An
- Ho Chi Minh City - Trung Luong highway, Ben Luc - Long Thanh highway with HCMC - Moc Bai highway

Traffic connection from Beltway 4

- Passing through 5 provinces: Ba Ria Vung Tau City, Dong Nai, Binh Duong, Ho Chi Minh City, Long An

Traffic connection from Highway 22

- The routes go through Hoc Mon, Cu Chi and Tay Ninh and arrive the Moc Bai border





SEAPORT LINK

04



HIEP PHUOC PORT
Distance 50 Km
(about 1h 43 minutes)

05



VICT PORT
Distance 43 Km
(about 1h 20 minutes)



CAT LAI PORT
Distance 50 Km
(about 1h 45 minutes)

06

01



MOC BAI BORDER
Distance 43 Km
(about 1h)



TAN SON NHAT AIRPORT
Distance 32 Km
(about 1h)

02

03



LONG AN PORT
Distance 73 Km
(about 1h 42 minutes)





INVESTMENT POLICY

BUSINESS INCOME TAX INCENTIVES:

- Section a) Clause 3 Article 15 & Article 16 of Decree No. 218/2013/ND-CP dated December 26, 2013 detailing and guiding the implementation of the Law on Corporate Income Tax:

Offer valid for **10 years**

First 2 years

ENTERPRISE INCOME TAX
APPLIES FOR TAX RATE

0%

Next 04 years

ENTERPRISE INCOME TAX
APPLIES FOR TAX RATE

8.5%

Remain 04 years

ENTERPRISE INCOME TAX
APPLIES FOR TAX RATE

17%

12 INDUSTRY GROUPS INVESTED

01

Group of electronic and telecommunications projects

02

Group of mechanical and metallurgical projects

03

Group of food and beverage processing projects

04

Group of projects to produce chemicals, pharmaceuticals, cosmetics, plastics, plastics

05

Stationery projects group

06

Group of textile and garment projects (not accepting dyeing processing projects)

07

Group of construction materials production projects

08

Group of industrial projects to produce domestic and export consumer goods

09

Group of other projects: medical equipment and machines; Warehouse, product display house

10

Projects for wood processing, glass and ceramic production

11

Agricultural product processing projects

12

Group of projects on processing and raising livestock, poultry & aquatic products



INDUSTRIAL PARK UTILITIES

DUC HOA III

ELECTRICITY DISTRIBUTION SYSTEM

Duc Lap Thuong 110KV transformer station will provide electricity for the entire operation of the industrial park, all 110KV transmission line goes on the technical land of Duc Hoa III-Slico Industrial Park.

CLEAN WATER SUPPLY SYSTEM

Used from 02 sources of clean water supply plants: Phu My Vinh Company and Kenh Dong Water Plant.

WASTE WATER TREATMENT SYSTEM

The centralized wastewater treatment plant is responsible for treating pre-cleaned wastewater from enterprises operate in SLICO Industrial Park according to input standards QCVN 40:2011 - column B and ensuring treatment of output wastewater meet Column A standards according to QCVN 40:2011. The total wastewater treatment capacity of the plant in phase 1 is 6,000 m³/day.

TELECOMMUNICATIONS INFRASTRUCTURE SYSTEM

Investors will be provided with the most modern telecommunications technology services such as: Lisealine, ADSL, fiber optic cable, ... Long An province's phone number system, with two transmission solutions for copper wireline and fiber optic cable, ensuring that the communication of customers is always smooth.







HIM LAM JOINT STOCK COMPANY

— Project developer and distributor —

INDUSTRIAL PARK

DUC HOA III

-  36m Road, Duc Lap Ha commune, Duc Hoa district, Long An
-  Industrial land for rent | Urban land for wholesale and retail
-  www.kcnduchoa3.vn
-  kcnduchoa3slico@gmail.com



0937 76 3838

